

After care – artificial grass

Congratulations on purchasing an artificial grass system from Cheshire Artificial Grass.

You have chosen a quality artificial grass product that you can enjoy for many years. Here are a few simple steps you can take to ensure that your new artificial grass continues to look its best for many years to come.

Surface cleaning:

If leaves and other organic debris are left on the surface they will break down, work their way deep into the pile and provide a growing medium for weeds, moss, algae and bacteria.

Ideally use a petrol blower to remove debris from the surface; if you don't have a blower then a stiff brush or plastic rake is perfectly adequate. This will need to be done more regularly during autumn.

Pet mess should be removed. If necessary, clean with warm water and a household detergent.

Most stains can easily be removed with a solution of hot (not boiling) water and a household detergent, for example, washing up liquid. Chewing gum can be removed using a freezing aerosol. Heavy oil marks can be removed with a cloth and methylated spirits.

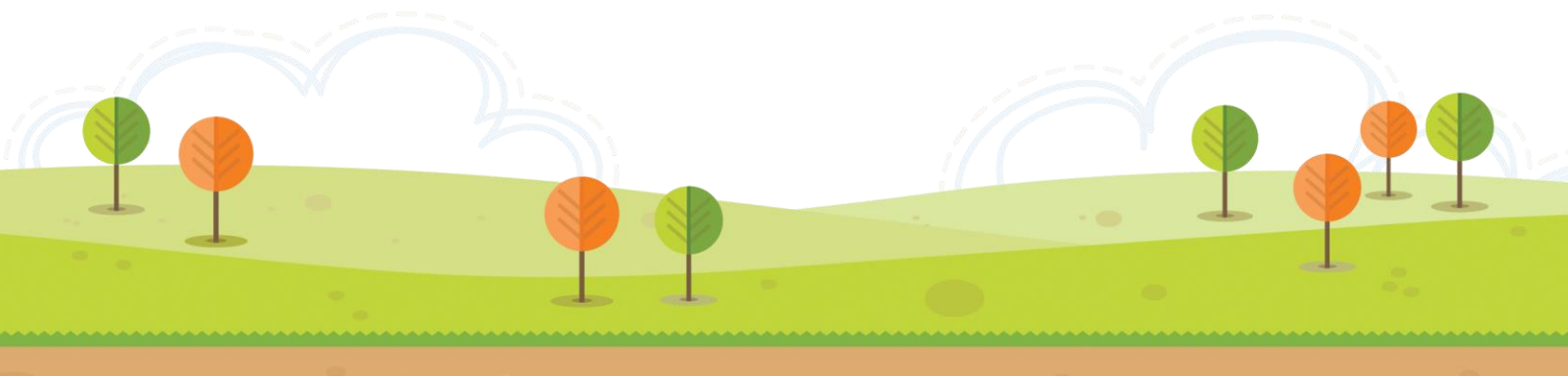
A jet wash *can* be used on artificial grass. Only use the widest angle nozzle held at least a foot from the grass surface as the direct jet nozzle can damage the surface when used at close proximity. Test in a small, discrete area before cleaning the rest of the grass.

When brushing, blowing or jetting the grass area finish by working against the pile. This will have the effect of 'fluffing up' the pile helping to maintain the realistic grass look.

Weeds:

Airborne seeds will land in the grass and can establish and grow. If organic debris has been allowed to settle and work deep into the pile this will be significantly harder to remove. Any seedlings that do grow can easily be pulled out by hand as they won't be able to establish a firm root in the grass.

Weed killer should be applied to the whole area twice a year; once in spring and once at the end of the summer. Do not use oil based weed killer.



Moss and algae:

It is unusual for a well-used artificial grass installation to suffer with moss or algae. It may happen where there is not a lot of foot traffic or if the area is particularly shaded and/or damp. If the surface is not cleaned regularly (as outlined above) issues with moss and algae can be significantly worse. Should moss become established it should be treated immediately, repeating the treatment until the moss can be brushed away.

Moss killer and algaecide should be applied as required. Do not use oil based products.

Snow and ice:

Snow and ice are not harmful and can be allowed to melt through. To remove snow use a brush or rubber edged scraper. Metal shovels or scrapers and chemical de-icers can damage the surface and should be avoided. Heavy use of the frozen area should be discouraged because the fibre can become brittle at low temperatures.

General care:

The following should be avoided on the artificial grass:

- Wearing football boots (studs)
- Wearing high heels with a 'sharp' heel
- Smoking
- Fireworks and bonfires
- Chewing gum
- Dirty footwear
- Painting (cover the grass if painting fences, sheds, decking etc.)
- Leaving heavy items (furniture or pots) on the grass – this will flatten the grass if left for continuous periods of time

Professional care:

Cheshire Artificial Grass can offer a professional artificial grass care service. We have specialised equipment including mechanical brushes and commercial blowers as well as weed/moss killers and antibacterial barrier treatments. Please call for details.

